

# INTRODUCTION TO META:PHI

---

## SECTION CONTENTS

- Introduction
- META:PHI Program Overview
- Program Mission
- Program Vision
- Program Strategic Priority Areas
- Program Structure and Governance
- RAAM Clinic Directory

## INTRODUCTION

This section reviews the provincial Mentoring, Education, and Clinical Tools for Addiction: Partners in Health Integration (META:PHI) program and its role in coordinating and providing support to publicly funded rapid access addiction medicine (RAAM) clinics across Ontario.

## META:PHI PROGRAM OVERVIEW

**META:PHI** is a provincial initiative to support health care providers working with people who use substances through education, mentorship, advocacy, and clinical tools.

META:PHI was established in 2015 to spread and scale the RAAM clinic model following a randomized controlled trial run out of Women's College Hospital that demonstrated that rapid or immediate access to supports for substance use resulted in better treatment engagement and improved health outcomes compared to delayed or usual access (i.e., waiting several days or weeks to be connected with supports).

Since then, META:PHI has created a library of over 100 original resources for health care providers and clients in a variety of settings, including primary care, emergency departments, withdrawal management services, and RAAM clinics. Since 2020, META:PHI has also operated as the central hub for Ontario's network of over 80 RAAM clinics, managing a directory of sites, setting quality targets, and overseeing an annual survey of RAAM clinic services.

META:PHI is funded through the [Ontario Ministry of Health](#) with in-kind support from [Women's College Hospital](#).

## PROGRAM MISSION



META:PHI promotes the delivery of high-quality care for people who use substances through education and clinical guidance, RAAM clinic oversight, and health system integration and advocacy.

## PROGRAM VISION



Integrated, appropriate, low-barrier, and equitable health care for people who use substances.

## PROGRAM STRATEGIC PRIORITY AREAS

### Networking and Integration



Help develop and strengthen care pathways for people who use substances by supporting integration of services between RAAM clinics, hospitals, primary care, and community-based services.

Facilitate collaboration across the spectrum of partners involved in care for people who use substances, including policy makers, health agencies, harm reduction and treatment services, and people with lived experience.

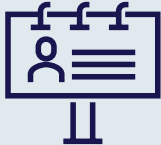
Maintain a community of practice related to substance use practice and policy.



### Oversight

Develop quality targets and best practices for Ontario's network of RAAM clinics.

### Education and Clinical Guidance



Create clinical tools, guidelines, and practice resources that facilitate the provision of evidence-informed, person-centred care across the spectrum of settings where people who use substances receive care.

Create learning opportunities such as webinars, case discussions, and an annual conference.

Incorporate perspectives of community members with lived and living experience of substance use into clinical tools and materials.



### Mentorship

Provide opportunities for mentorship and collaboration among providers, planners, and people who use substances.

### Standards and Policy



Create clinical and administrative targets for substance use-related care that are responsive and person-centred.

Influence provincial policies concerning the structure and delivery of health services for people who use substances.

Advocate for low-barrier, appropriate, integrated, and flexible services for people who use substances.

## PROGRAM STRUCTURE AND GOVERNANCE

META:PHI is led by a [core team](#) of six individuals and supported by a 14-member advisory committee representing diverse perspectives, professions, and regions of Ontario. The advisory committee has at minimum two individuals with lived and living experience of substance use who play an active role in decisions related to the program's direction. META:PHI also engages with a roster of community consultants, individuals with lived and living expertise of substance use, who contribute to all of META:PHI's educational and clinical materials and events as writers, reviewers, and speakers.

## RAAM CLINIC DIRECTORY

As part of its oversight role, META:PHI maintains a [provincial directory of RAAM clinics](#).

To be listed on the directory, clinics must be at least partially publicly funded through their Ontario Health Region, participate in the annual RAAM clinic survey conducted by META:PHI, and provide META:PHI staff with updates to clinic details (hours, location, etc.) as requested.